



CONTRACTING SPECIALISTS
INCORPORATED

PROJECT PROFILE

www.contractingspecialists.com

1500 Massachusetts Avenue - Washington, DC

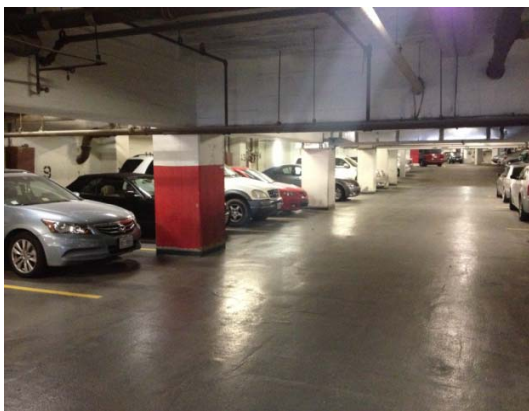
Structural Parking Garage Repairs & Vehicular Coating Application

OWNER: Equity Residential

ENGINEER: Walker Restoration Consultants

Located in downtown Washington DC between Scott Circle and Thomas Circle and just a short walk to Dupont Circle Metro, the apartments at 1500 Massachusetts Avenue provide an ideal metropolitan setting for professionals. The apartment building contains a two level, below grade parking garage for residents as well as daily & monthly parking for surrounding businesses.

The CSI team performed various structural concrete repairs consisting of: full depth repairs on the elevated, pan-deck slab, vertical repairs, partial & full depth joint repairs. Following the concrete repairs, supplemental floor drains were installed, cracks were routed and sealed and a traffic grade, urethane coating system was applied to the elevated slab surface.



Since 1996, Contracting Specialists Incorporated has steadily emerged as a leader in specialty construction, providing clients with proven and innovative solutions for concrete restoration, masonry restoration and waterproofing. Visit www.contractingspecialists.com

Corporate Office:
Regional Office:
Regional Office:
Regional Office:

453 South Main Street, Attleboro, MA 02703
1600 North Powerline Road, Pompano Beach, FL 33069
477 Congress Street, 5th Floor, Portland, ME 04101
4061 Powder Mill Road, Suite 700, Calverton, MD 20705

P/ 508.222.2377
P/ 954.786.3223
P/ 207.523.3431
P/ 888.931.0125