



**CONTRACTING SPECIALISTS**  
INCORPORATED

# PROJECT PROFILE

[www.contractingspecialists.com](http://www.contractingspecialists.com)

## Emerald Tower Condominiums - Pompano Beach, FL

### Vehicular Deck Coating System Installation, plus Concrete Repairs in Garage

#### DESCRIPTION:

Good preventative maintenance planning and value Engineering by this project's condominium association enabled them to extend the life expectancy and warranty on their vehicular deck coating system. A decision was made with advisement from the association's Consulting Engineer and the Manufacturer, to recoat the deck, thereby extending its warranty for an additional five years.

CSI was contracted by the association to clean and prepare the existing Carlisle coating system and subsequently apply an additional two top coats with slip resistance aggregate broadcast into each coat.

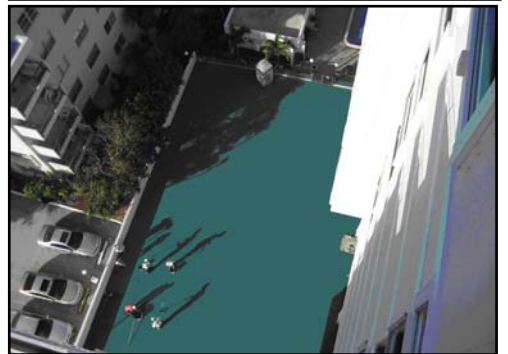
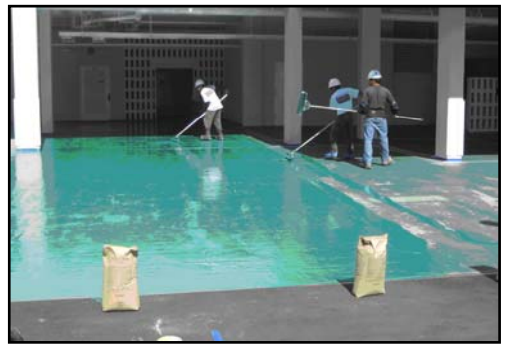
As part of the project, CSI removed and replaced the existing planter waterproofing with Carlisle's 500R Hot Applied Waterproofing system. While both phases of waterproofing were being completed, miscellaneous concrete repairs were completed in the garage below.

The building remained occupied during the entire construction project. The phasing of the project proved to be vital in the relationship of the contractor and the residents. Through constant communication with the association's Board of Directors, CSI was able to maintain parking for all residents, as well as a safe environment for workers and residents.

OWNER: Emerald Tower Condominium Assoc.

ENGINEER: Swaysland Professional Engineering Consultants

DATE: October 2007 - March 2008



Since 1996, Contracting Specialists Incorporated has steadily emerged as a leader in specialty construction, providing clients with proven and innovative solutions for concrete restoration, masonry restoration and waterproofing. Visit [www.contractingspecialists.com](http://www.contractingspecialists.com)

Corporate Office: 453 South Main Street, Attleboro, MA 02703  
 Regional Office: 1600 North Powerline Road, Pompano Beach, FL 33069  
 Regional Office: 477 Congress Street, 5th Floor, Portland, ME 04101  
 Regional Office: 4061 Powder Mill Road, Suite 700, Calverton, MD 20705

P/ 508.222.2377  
 P/ 954.786.3223  
 P/ 207.523.3431  
 P/ 888.931.0125